

Dell MFP Laser Printer 1600n

DELL MAKES IT EASY TO BUY, USE AND OWN PRINTERS

Easy to Buy

Robust multifunction print, copy, scan & fax
Helps reduce office costs by consolidating devices

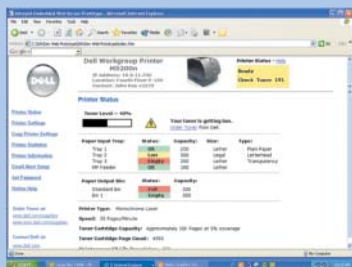
Dell Direct Advantage: Order online or through our professional sales team
Convenient recycling options included with hardware and toner at no additional cost

Easy to Use

Dell Printer Web Tool
Industry-standard network compatibility
24x7 toll-free technical phone support

Easy to Own

Convenient toner ordering and delivery with the Dell Toner Management System™
Dell award-winning service & support staff
One-stop shopping and support with Dell printers, systems, and network products



Dell Printer Web Tool

Designed for easy installation, configuration and management of Dell network printers and consumables, this web-based tool can be set up to provide automatic e-mail notifications of printer, consumables and paper-handling alerts.

- Can be accessed using a standard web browser
- Doesn't require additional software installation
- Resides on printer hardware



Print, scan, copy, and fax with the Dell Multifunction Laser Printer 1600n. Fast, durable, and versatile, the 1600n is an excellent solution for a small workgroup or single user. Consolidate multiple office devices into one easy-to-manage multifunction printer. Networking is standard so you can improve efficiency and save space by sharing the 1600n over your office network.

The 1600n includes award-winning PaperPort Deluxe 9.0 with Advanced OCR software for desktop paper and document management. Easily organize, find and share documents and images for improved productivity.

Help reduce costs with the 1600n low toner cost per page without sacrificing performance and speed. Easily manage and order supplies with the Dell Toner Management System™.

The Dell MFP Laser Printer 1600n delivers:

Outstanding Performance

- Fast monochrome printing and copying, up to 22 pages per minute¹
- Sharp 1200 image quality for professional documents
- High-performance scanning up to 4800 dpi enhanced resolution
- Stand-alone fast faxing in black or color with built-in 33.6Kbps fax modem with 200 speed dials and Confidential Fax mode
- Durable - up to 15,000 page monthly duty cycle

Easy to Afford

- Save money by consolidating multiple office devices into one - fax, copier, scanner, printer
- Includes a full version of award-winning PaperPort™ Deluxe 9.0 business software to get the most out of your MFP and enhance productivity
- Ships with 3,000 page yield toner cartridge*
- Low Toner cost per page

Quality Dell Service & Support

- 24x7 toll-free technical phone support
- One-year Next-Business-Day Advanced Exchange Service²
- Two-, three- and four-year Extended Service options
- Options include Onsite Service³, Printer Gold Technical Phone Support, Installation, Premier Access, and Asset Tagging

Easy to Use

- Includes setup placemat for quick and easy installation
- Hands-free multiple-page copying and faxing with built-in 50-page Automatic Document Feeder (ADF).
- Scan documents directly to email, .pdf, or Scan-to-OCR to convert documents directly into editable files in a variety of formats including Microsoft Word and Excel FormTyper™
- Easy toner installation using drop-in cartridge design

Easy to Order Toner

- Dell Toner Management System™ - Intelligent toner monitoring proactively notifies you before you run out of toner
- Direct link to order toner at www.dell.com/ supplies from Low Toner alert
- 3-5 Day shipping included at no additional charge, overnight shipping available⁴
- Environmentally friendly: Dell pays postage to return toner cartridges to Dell for recycling
- Lifetime limited toner cartridge warranty⁵

Exceptional Performance. Easy as **DELL**™



Dell MFP Laser Printer 1600n

DELL TONER MANAGEMENT SYSTEM™ IS AS EASY AS 1-2-3

1. Intelligent software alerts you when toner levels are low. Select the recipient of the alert using the Dell Printer Web Tool.

2. Click "Order Toner Online" and connect directly to www.dell.com/supplies and www.premier.dell.com or call 1-877-Ink-2-You.

3. Select printer model, enter your payment information and your toner is ordered. Save time and money with no-charge three- to five-day ground shipping.⁴

SERVICE AND SUPPORT

One year of Next-Business-Day Advanced Exchange Service² provided by Dell's award-winning service and support staff

- 24x7 toll-free technical phone support

- Onsite Service³, Installation, Asset Tags and Printer Gold Technical Phone Support options are also available

- You can use the Dell Online Support site for the most up-to-date drivers and technical information about your printer. Visit www.support.dell.com for details

RECYCLING MADE SIMPLE



Recycling printers and toner with Dell is easy, safe and no charge to the customer. Visit www.dell.com/recycling for details.

- Each Dell printer includes instructions for returning an old printer for recycling

- Dell toner cartridges include a prepaid label to return the used cartridge for recycling

- Dell pays shipping charges for printer and toner recycling

FEATURES	DESCRIPTION
Printer Type:	Multifunction Monochrome Laser
Functions:	Print, Copy, Scan, Fax; standalone Copy and Fax
Max Print Resolution (B&W):	1200 image quality, 600x600 dpi
Max Scan Resolution:	4800x4800 dpi interpolated, 600x1200 dpi optical
Max Print Speed¹:	22 ppm print and copy
Memory / RAM Installed (Max):	32 MB Standard / 160 MB Max
Processor:	166 MHz
Media Input Capacity (Std/Max):	250 sheet / 500 sheet
Media Output Capacity (Std/Max):	150 print / 50 ADF
Max Media Size:	8.5" x 14"
Zoom Range:	25- 400%
Monthly Duty Cycle:	Up to 15,000 pages/month
Media Feeder(s):	50 sheet Automatic Document Feeder, Optional 500 sheet paper drawer
Media Sizes / Types:	A4, Letter, Legal, Folio / Plain Paper, Label, Cardstock, Transparency, Standard Envelope
Port(s) / Option Slots:	USB 2.0, 10/100 BaseT Ethernet / 1 SDRAM DIMM
Enclosure Color:	Midnight Gray, Ion Silver
Cartridge Yield:	3,000 page (included) and 5,000 page yield toner cartridges
Paper Weight:	16-24 lb drawer, 16-43 lb manual
Print Languages / Fonts:	GDI, PCL6, PS3 / 45 Scalable, 1 Bitmap
Included:	3,000 page Toner cartridge, 250-sheet standard drawer, power cable, (USB cable not included)
Software Included:	PaperPort™ Deluxe 9.0 business software; Dell Toner Management System™; Dell Printer Web Tool; Local Printer Setup Utility; TCP/IP Setup Utility
Dimensions (WxDxH) / Weight:	17.7" x 16.7" x 18" / 34.1 lbs
Min. Operating System:	Windows® (95, 98, Me, 2000, 2000 Server, XP, NT 4.0, 2003 Server)
Sound Emission:	51dBA print, 55 dBA copy, 39 dBA standby
Humidity Range / Operating:	20~80% operating, 10-90% non-operating
Max Operating Altitude / Temp.:	8,200 ft/ 10-32 degrees C
Power:	350W (operational), 20W (sleep) Energy Star compliant
Voltage Required:	100-127 VAC
Certifications:	Energy Star, FCC Class B, CE, MIC, UL1950, EPA, Power Save

*Monochrome print cartridge yield based on 5% page coverage; color print cartridge yield based on 20% page coverage. Yields vary with usage and environmental conditions.



Exceptional Performance. Easy as **DELL™**

Dell cannot be responsible for pricing or other errors, and reserves the right to cancel orders arising from such errors. 1 Actual print speed will vary with use. 2 Replacement part or unit will be dispatched if necessary following phone-based troubleshooting in advance of receipt of returned defective unit. Subject to parts availability, geographical restrictions and terms of service contract. Service timing dependent upon time of day call placed to Dell. Defective unit must be returned. Replacements may be refurbished. U.S. only. 3 Service may be provided by third-party. Technician will be dispatched if necessary following phone-based troubleshooting. Subject to parts availability, geographical restrictions and terms of service contract. Service timing dependent upon time of day call placed to Dell. U.S. only. 4 Valid for Continental (except Alaska) U.S. only. 5 For a copy of our guarantees or limited warranties, please write Dell USA L.P., Attn: Warranties, One Dell Way, Round Rock, TX 78682. For more information, visit http://www.dell.com/us/en/gen/misc/policy_010_policy.htm. Dell and the Dell logo are registered trademarks of Dell Inc. Microsoft and Windows are registered trademarks of Microsoft Corporation in the U.S. and other countries. Other trademarks and trade names are used to identify the entities claiming the marks and names of their products. Dell Inc. disclaims any proprietary interest in trademarks and trade names other than its own. © Copyright 2004 Dell Inc. All rights reserved.